

catching

case studies

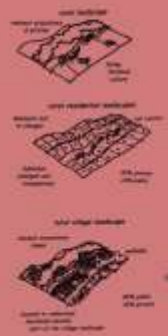
the essence



The Hillside Aberdour, Fife, 2010

Preparation of a Conceptual Plan and Urban Design Statement for the proposed development of portion of the land 'Hillside' for mixed residential and employment use. Representation: the Dunfermline and East Fife Consultative Draft Local Plan, April 2010.

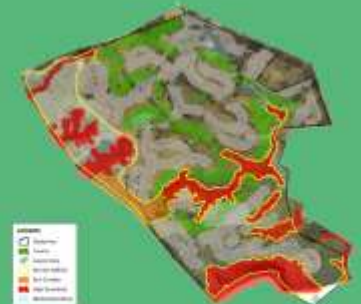
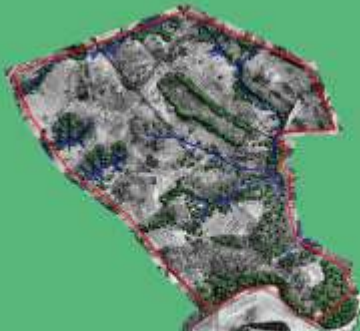
The central planning and design theme is the adoption of a 'rural village landscape' approach as a means of allowing normal village growth to take place within the village/countryside interface as opposed to creating a hard 'edge' with urban-type development.





Gqunube Valley Golf Resort 2007

Commissioned in 2005 to undertake community and key stakeholder engagement, town planning, detail urban design and related project management on a 428 ha golf estate for the Billion Group. This elevated site is located in the Eastern Cape (South Africa) near the settlement of Gonubie overlooking the Gqunube River and the Indian Ocean. The design provides for a 18-hole championship golf course and associated facilities, a 5-star Hotel, golf villas and a lodge, together with 780 single residential plots and privately managed internal engineering services. Work on appeal and planning obligations agreement. Obtained EIA authorisation and full planning permission in December 2007.





One-Stop Shop Zone Administration Complex



Customs Controlled Entrance Statement

The East London Industrial Development Zone, 2002

Core consultant within a multi-disciplinary project team tasked in early 2000 with the investigation, conceptualisation and detail design of Phase 1 (400ha) of an export-oriented and customs secured industrial park. The brief was extended to obtain full planning permission, work on appeal, national IDZ designation through Cabinet, IDZ Operator Permit, application to Government for critical bulk infrastructure funding, land acquisition from Council and related project management.

The ELIDZ is the first fully operational IDZ in the country, follows international best practice in Hi-Tech Export Processing Zones and is ISO14001 accredited - See www.eldz.co.za/about_the_el_idz



The East London Central Business District & Sleeper Site, 1998

As city-based planning and urban design consultant of a multi-disciplinary project team, established a redevelopment strategy and associated urban design framework for the East London Central Business District - Eastern Cape.

This project won a South African Institute of Architects award in 1999.

The urban design presented a "Package of Plans" approach:

- Contextual Framework Plan
- Development Framework Plan
- Precinct Plans (10)
- Site Development Plans
- Building Plans

To create a robust and flexible "basket of land use rights" which could respond to changing market conditions over time.

